

# Ball Bearings

---

## BENEFITS

- Especially suited for clean vacuum applications and extrem residual gas requirements
- With shields (non-rubbing seals)
- With dry lubrication
- Bearing clearance
- 2011/65/EU RoHS compliant



## ORDER INFORMATION

---

Type	624	605	626	608	6000	6001
Ball bearing 10/26x8					214-215	
Ball bearing 12/28x8						214-216
Ball bearing 4/13x5	214-211					
Ball bearing 5/14x5		214-212				
Ball bearing 6/19x6			214-213			
Ball bearing 8/22x7				214-214		

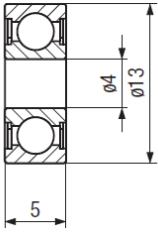
## SPECIFICATIONS

Type		624	605	626	608	6000	6001
Service life (1) (revolutions)		>20 Mio.	>20 Mio.	>20 Mio.	>20 Mio.	>20 Mio.	>20 Mio.
Rotational speed at							
20 °C	RPM		4000				
300 °C	RPM		1500				
Pressure (absolute)	mbar	$1 \times 10^{-12} \dots$ $1 \times 10^{-2}$	$1 \times 10^{-12} \dots$ $1 \times 10^{-2}$	$1 \times 10^{-12} \dots$ $1 \times 10^{-2}$	$1 \times 10^{-12} \dots$ $1 \times 10^{-2}$	$1 \times 10^{-12} \dots$ $1 \times 10^{-2}$	$1 \times 10^{-12} \dots$ $1 \times 10^{-2}$
Operating temperature (2)	°C	-200 ... +300	-200 ... +300	-200 ... +300	-200 ... +300	-200 ... +300	-200 ... +300
Material							
Inner ring, outer ring, balls	AISI/DIN	stainless steel – / 1.4037	stainless steel – / 1.4037	stainless steel – / 1.4037	stainless steel – / 1.4037	stainless steel – / 1.4037	stainless steel – / 1.4037
Cage	AISI/DIN	stainless steel 430 / 1.4016	stainless steel 430 / 1.4016	stainless steel 430 / 1.4016	stainless steel 430 / 1.4016	stainless steel 430 / 1.4016	stainless steel 430 / 1.4016
Coating (dry lubrication)							
Inner ring, outer ring, cage		Wolfratherm ®	Wolfratherm ®	Wolfratherm ®	Wolfratherm ®	Wolfratherm ®	Wolfratherm ®
Rotational speed at							
20 °C	RPM	5000		3000	2500	2000	1500
300 °C	RPM	1500		1000	800	500	300
Load capacity (1)							
Static load rating (Co)	N	400	400	800	1000	1500	2000
Dynamic load rating (C)	N	50	50	100	150	200	250
Load capacity (1)							
Axial load		<<C	<<C	<<C	<<C	<<C	<<C
Fit according to ISO		G6 / f6	G6 / f6	G6 / f6	G6 / f6	G6 / f6	G6 / f6
Weight	kg	0.003	0.004	0.008	0.013	0.02	0.025

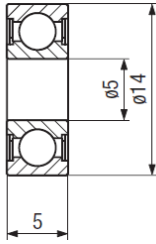
1) at 20°C, half value at 300°C

## DIMENSIONS

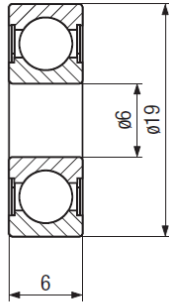
214-211



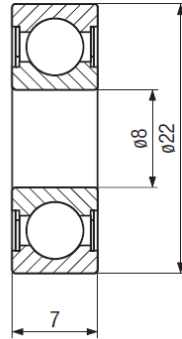
214-212



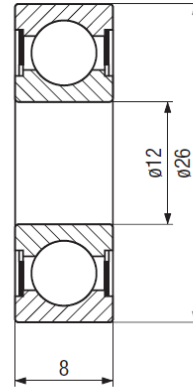
214-213



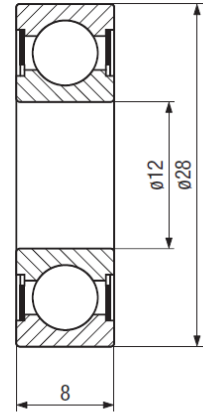
214-214



214-215



214-216



[mm]



[www.inficon.com](http://www.inficon.com) [reachus@inficon.com](mailto:reachus@inficon.com)

Due to our continuing program of product improvements, specifications are subject to change without notice.  
RateWatcher is a trademark of INFICON. All other trademarks are the property of their respective owners.

(2016-08) © 2016 INFICON