

电气馈入装置 DN16 ISO-KF

INFICON 供应价格经济的 ISO-KF 法兰馈入装置，多年来，这些装置已在世界各地应用于各种标准真空中。除馈入装置外，还配置了各种真空连接器和真空室大气侧。

各种大小和技术规格的 CF 法兰馈入装置可应用于超高真空应用。



益处

- 2011/65/EU RoHS 符合

订购信息

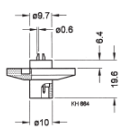
类型	4 Feedthroughs with ATM Connector	9 Feedthroughs with ATM Connector	9 Feedthroughs with ATM & Vacuum Connector
Feedthrough, 4 poles, DN 16 ISO-KF	214-111		
Feedthrough, 9 poles			214-113
Inner plug connector, 9p			214-191
Outer plug connector, 4 p	214-171		
外置插塞接头,9p		214-172	214-172
馈入装置,9极		214-112	

规格

类型		4 Feedthroughs with ATM Connector	9 Feedthroughs with ATM Connector	9 Feedthroughs with ATM & Vacuum Connector
真空连接		DN 16 ISO-KF	DN 16 ISO-KF	DN 16 ISO-KF
馈入装置数量		4	9	9
每极电压	V	50	50	50
每极电流	A	1	2	2
连接				
真空侧		solder connection	solder connection	connector
大气侧		connector	connector	connector
连接线直径	mm	0.6	1.2	1.2
密封度	mbar•L/s	1×10^{-9}	1×10^{-9}	1×10^{-9}
压力 (绝对)		1×10^{-8} mbar ... 2.5 bar	1×10^{-8} mbar ... 2.5 bar	1×10^{-8} mbar ... 2.5 bar
烘烤温度 (馈入装置和连接器)	°C	130	130	130
壳体		stainless steel 303/1.4305	stainless steel 303/1.4305	stainless steel 303/1.4305
绝缘子		PEEK / Araldite	PEEK / Araldite	PEEK / Araldite
密封圈		FPM	FPM	FPM
触点 (馈入装置和连接器)		gold-plated / brass / inox	gold-plated / brass / inox	gold-plated / brass / inox

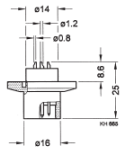
尺寸

214-111



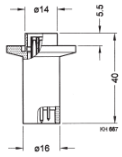
Feedthrough

214-112



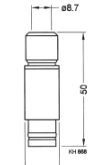
Feedthrough

214-113



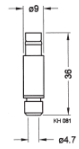
Feedthrough

214-191

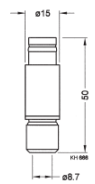


Connector:
vacuum side

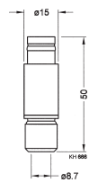
214-171



214-172



214-172



Connector:
air side



www.inficon.com reachus@inficon.com

由于我们的持续产品改进计划，因此产品规格可能会有变更，恕不另行通知。
RateWatcher 是 INFICON 的商标。所有其他商标均为其各自所有者的财产。

(2016-08) © 2016 INFICON